

AWI Partner Program Reports

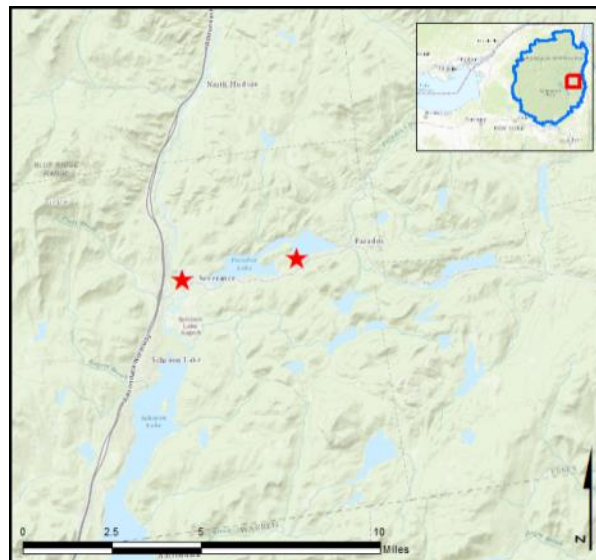
Schroon Region – Paradox Lake & Northern Schroon/Paradox Decon Station

AIS intercepted: 3
Boats inspected: 1,145
Number of visitors: 1,962
Boats failing inspection: 0.3%
Visitors showing spread prevention awareness: 88%
Number of previously visited waterways: 45

AIS Present in Waterbody: curly-leaf pondweed,
 Eurasian watermilfoil, variable-leaf milfoil

Partnerships: Paradox Lake Association, NYSDEC Paradox Lake
 Campground

Notes: AWI provided support through steward training, supervisory
 service, a loaner iPad, and WISPA data management throughout the
 season.



Watercraft	Boat Type										total # boats observed	total # boats inspected
	Barge	Canoe	Dock	Kayak	Motor	PWC	Row	Sail	SUP	Wind		
Paradox Lake	0	46	2	315	561	20	11	0	14	0	969	953
percentage of total boats	0%	5%	0%	33%	58%	2%	1%	0%	1%	0%	100%	98%
N Schroon/Paradox DECON	0	1	0	25	146	17	2	1	0	0	192	192
percentage of total boats	0%	1%	0%	13%	76%	9%	1%	1%	0%	0%	100%	100%
totals	0	47	2	340	707	37	13	1	14	0	1161	1145
percentage of total boats	0%	4%	0%	29%	61%	3%	1%	0%	1%	0%	100%	99%

Boats observed at launch, including those not inspected. PWC=personal watercraft, SUP=stand-up paddleboard, Wind=windsurfer.

	total # visitors	organisms found			total organisms	# boats dirty	# boats w/AIS	# of inspections	% of inspected boats dirty	% of inspected boats w/AIS
		entering	leaving	roadside						
Paradox Lake	1638	0	0	--	0	0	0	953	0.0%	0%
N Schroon/Paradox DECON	324	--	--	4	4	4	3	192	2.1%	1.6%
totals	1962	0	0	4	4	4	3	1145	0.3%	0.3%

Boats dirty = watercraft with any organic material, invasive, non-invasive or unknown.

Visitor Responses	AIS spread prevention awareness											# groups asked
	yes	Inspect	Wash	Drain	Bait	LW	Dry	Decon	same lake	first/frozen	didn't ask	
Paradox Lake	644	197	206	23	3	17	64	0	108	153	42	758
percentage of total groups asked	85%	26%	27%	3%	0%	2%	8%	0%	14%	20%	NA	
N Schroon/Paradox DECON	176	15	13	16	0	1	40	175	0	1	0	176
percentage of total groups asked	100%	9%	7%	9%	0%	1%	23%	99%	0%	1%	NA	
totals	820	212	219	39	3	18	104	175	108	154	42	934
percentage of total groups asked	88%	23%	23%	4%	0%	2%	11%	19%	12%	16%	NA	

Yes = showed AIS spread prevention awareness; Drain = drained bilge; Bait = emptied bait bucket/disposed of bait; LW = drained livewell; Dry = dried boat; Decon = visited decon station; Same Lake = boat only goes in this lake; First/Frozen = first launch of the season or frozen boat.

Organisms Removed	Organism Type									total # AIS	% of inspected boats w/AIS
	Non-invasive	BN*	CLP*	EF*	EWM*	VLM*	SWF*	WC*	ZM*		
Paradox Lake	0	0	0	0	0	0	0	0	0	0	0%
percentage of total orgs	0%	0%	0%	0%	0%	0%	0%	0%	0%		
N Schroon/Paradox DECON	1	0	0	0	1	0	0	0	2	3	1.6%
percentage of total orgs	25%	0%	0%	0%	25%	0%	0%	0%	50%		
totals	1	0	0	0	1	0	0	0	2	3	0.3%
percentage of total orgs	25%	0%	0%	0%	25%	0%	0%	0%	50%		

Non-invasive = native aquatic or terrestrial material; BN = brittle naiad; CLP = curly-leaf pondweed; EF = European frogbit; EWM = Eurasian watermilfoil; VLM = variable-leaf milfoil; SWF = spiny waterflea; WC= water chestnut; ZM = zebra mussel; */AIS = aquatic invasive species.

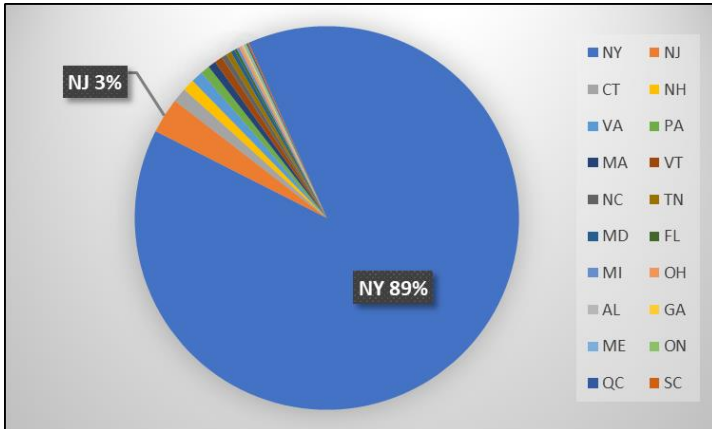
Aquatic Invasive Species Intercepted by Stewards	# found at roadside	Previous Waterway
Eurasian watermilfoil	1	Paradox Lake (1)
zebra mussel	2	Ballston Lake (1), Lake Champlain (1)
Totals	3	

Previous Waterways for Launching Boats	# visits
NONE	457
SAME LAKE - PREVIOUS VISIT	183
Lake George	29
Lake Champlain	28
Schroon Lake	25
NOT ASKED	21
Hudson River	17
Paradox Lake	10
Saratoga Lake	8
UNKNOWN (boater doesn't know)	8
Brant Lake	7
Great Sacandaga Lake	7
Putnam Pond (Essex County)	6
Eagle Lake (Essex County)	5
Catlin Lake (Essex/Hamilton Counties)	4
Lake Louise Marie (Sullivan County)	4
Lincoln Pond (Essex County)	4
Mohawk River	4

Previous Waterways for Launching Boats	# visits
RENTAL	4
Indian Lake (Hamilton County)	3
Lake Ontario	3
Susquehanna River	3
Ballston Lake	2
Forked Lake	2
Lake Winnepesaukee, Alton, NH	2
Long Island Sound	2
Loon Lake (Warren County)	2
Palmer Pond (Warren County)	2
Schroon River, NY	2
Adirondacks (unspecified)	1
Augur Lake (Essex County)	1
Candlewood Lake, Brookfield, CT	1
Chateaugay Lake	1
Connecticut River	1
Fish Creek Ponds	1

Previous Waterways for Launching Boats	# visits
Glen Lake (Warren County)	1
Greenwood Lake (Orange County)	1
La Chute River, NY	1
Lake Placid	1
Lake Wallenpaupack, PA	1
Long Lake	1
Lower Saranac Lake	1
Merrill Creek Reservoir, Harmony, NJ	1
Middle Saranac Lake	1
Round Lake (Saratoga County)	1
Rushford Lake (Allegany County)	1
Sagamore Lake (Hamilton County)	1
Seventh Lake	1
St. Lawrence River	1
Stillwater Reservoir	1
Taylor Pond (Clinton County)	1
unspecified river in Alabama	1
Total	877

State of Motorized Boat Registration
(n=903)



Paradox Lake only

